

高压同轴连接器主要供核仪器或电子测量装置中高压电源与装置之间连接用。

SHV 型是卡口连接式。该产品具有连接方便、性能稳定、耐高压等优点，能与国外同类型产品在机械和电性能上达到完全互换。

SHV 型符合 IEC498 (1975)、MIL-C-39012/105(1980.9)、MIL-C-39012/110(1980.9)。

主要技术特性 **Technical Characteristics**

| | |
|---|---------------------------------------|
| Impedance | 50Ω、75Ω |
| Frequency range | DC… 300MHz |
| Dielectric withstanding voltage(at sea level) | 5.0kV rms, 50Hz (depending on cable) |
| Working voltage (at sea level)unmated | ≤3.5kV rms, 50Hz (depending on cable) |
| Carana extinction voltage (at 21000m) | ≥350V rms, 50Hz (depending on cable) |
| Insulation resistance | ≥ 10 ⁶ MΩ |
| Contact resistance | -centre contact≤ 2mΩ |
| | -outer contact≤ 1.5mΩ |
| Current rating, continuous | ≤ 10A |
| Coupling nut torque | 7 Ncm……28Ncm / 0.6 in.lbs…2.5in.lbs |
| Coupling nut retention force | ≥ 450N/101.2lbs |
| Contact captivation | ≥ 27N/6.1lbs |
| Durability (matings) | ≥500 |

材料与涂覆 **MATERIAL & PLATING**

| | | |
|-----------------------|--------------------------------|----------------------------------|
| 壳体 shell | 黄铜 brass | 镀镍或三元合金 nickel or CuSnZn3 plated |
| 插针 contact pin | 黄铜 brass | 镀硬金 gold plated |
| 插孔 socket | 铍青铜或锡青铜 beryllium or tin brass | 镀硬金 gold plated |
| 绝缘体 insulator | 聚四氟乙烯 PTFE | |
| o 型密封件 o-ring sealing | 硅橡胶 silastic | |

适用技术特性 **Applicable Standard**

GB5946、IEC498、MIL-C-39012

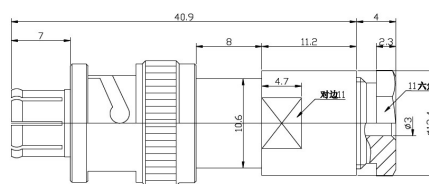
装接式电缆连接器/clamp cable connectors

直式插头/Straight Plugs(male)

适用软电缆/ For flexible cables

电缆外导体装接/Cable entry clamp

中心导体焊接/Centre contact soldered



| 型号 | 配接电缆 |
|-----------|--------------------------|
| SHV-TK3 | RG-174、RG-188、SYV-50-2-1 |
| SHV-TK5 | RG-58、RG-142、SYV-50-3-1 |
| SHV-TK240 | LMR-240 |
| SHV-TK12 | RG-59、SYV-75-4 |
| SHV-TK13 | RG-62、SYV-75-5 |
| SHV-TK27 | SYV-50-5 |