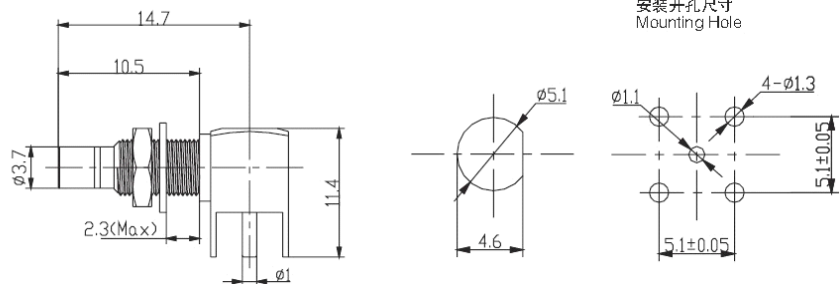
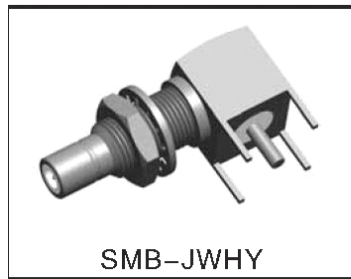


印制板式安装终端 (PCB Mounted)



主要技术特性 TECHNICAL CHARACTERISTICS

温度范围 Temp.range	-65~+165°C (PE Cable)
振动 Vibration	MIL-STD-202, Method 213
特性阻抗 Impedance	50 Ω
频率范围 Frequency Range	DC~1GHz
工作电压 Working Voltage	335V max (有效值)
耐压 Withstand Voltage	1000V rms (海平面在效值)
接触电阻 Contact resistance	内导体之间 Center Contact $\leq 6\text{ m}\Omega$
	外导体之间 Outer Contact $\leq 1\text{ m}\Omega$
绝缘电阻 Insulation resistance	$\geq 1000\text{ M}\Omega$
插入损耗 Insertion loss	$\leq 0.15\text{ dB}$ (1GHz max)
电压驻波比 VSWR	直式 Straight ≤ 1.25
	弯式 Right angle ≤ 1.45
防水等级	IP67
机械耐久性	≥ 500 次 (cycles)

材料与涂覆 MATERIAL & PLATING

壳体 shell	黄铜 brass	镀硬金 gold plated
插针 contact pin	黄铜 brass	镀硬金 gold plated
插孔 socket	铍青铜或锡青铜 beryllium or tin brass	镀硬金 gold plated
绝缘体 insulator	聚四氟乙烯 PTFE	
o型密封件 o-ring sealing	硅橡胶 silastic	

适用技术标准 APPLICABLE STANDARD

MIL-C-39012;
CECC 22130;
IEC 60169-10.